



**MYcenae Gardens are YOURcenae
Gardens**

and they need YOUR help - NOW

Current state

- The gardens are open to and are enjoyed by many different parts of our community
- The gardens are a 'Site of Importance for Nature Conservation' and a haven for wildlife
- The gardens belong to Greenwich council
- Greenwich council has the responsibility of maintaining the gardens
- Budgetary cuts are increasingly reducing the council's capacity to maintain the gardens
- We do have a 'Friends' group that tries to help maintain and develop the gardens for the community, **BUT**
- Our Friends group lacks people and funding

Looking to the Future....

- Without community engagement the gardens will gradually but inevitably fall into disrepair
- Letting the gardens deteriorate would have a devastating effect on the local wildlife and be a real loss to the community.
- Imagine what it would be like if the Gardens were gone?

So how can you help?

The existing Friends group is small, and we need more members and funding to make a real difference.

You can help:

- By working on our regular Action days maintaining plants and fences
- Being our eyes and ears if you think there is something wrong in the Gardens
- Regular cash donation via standing order
- One-time gifts of funds
- Donations of plants or materials

For any of these, please contact the friends at our email address:
friendsofmycenaegardens@gmail.com

Or use the QR code to access our website



What next?

The Friends are producing a 5-year plan that is designed to both maintain and develop the gardens.

Because of the current constraints on time and budget, the initial stages of the plan are modest, but our intent is to gradually deliver much more, as our team of volunteers and budgets increase.

The 5-year plan will enable us to gradually evolve the gardens to be more beautiful, support a diversity of wildlife, and to provide something that the wider community can enjoy. Once the oases in the gardens are more established we hope to provide access for the wider community including:

- Groups from Mycenae House
- Local Schools
- Gardening clubs

as well as preserving the use that people already make of the area for things like:

- pre and post school meeting
- school activities
- dog walking
- spending time in the outdoors, enjoying nature

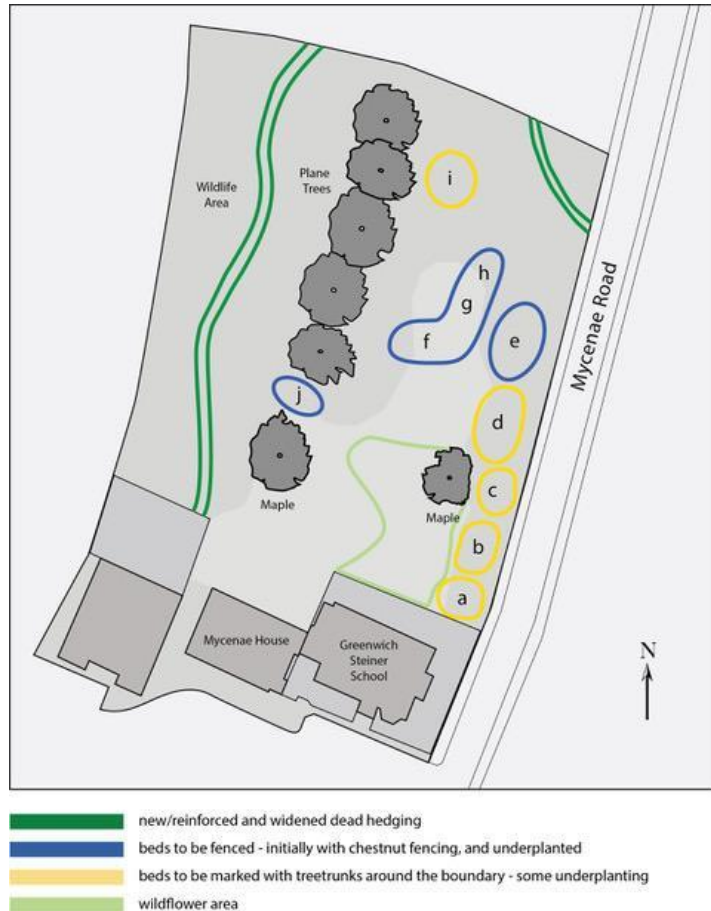
The broad programme of work

The detailed plans for phase 1, which is due to start in q4 2024, follow on from this, but later stages will include:

- expansion of the meadow
- regeneration of the grassy areas
- creation of more oases of plants
- expansion of the wildlife areas
- adding to and maintaining the tree population
- providing more access to the wooded areas

The timing of these later phases will be dictated by the resources we have available to us.

Our hope is that we will gain momentum as we progress, and more and more community groups become part of our work.



The immediate plan

The rough sketch opposite shows the layout of the gardens.

Our intention is to develop small oases of beauty in the fenced off areas. We need to fence them off initially so that we can protect the young plants, but in time, they should be well enough established to be self-protecting. If this does not happen, then we may need to acquire some attractive fencing to protect the areas while not detracting from their beauty.

These oases will contain a variety of planting as detailed in the following slides. All of the planting is intended to not only look beautiful, but to encourage pollinators that are vital for our biodiversity.

Historically, the grass area has suffered from overuse, and this is unlikely to change any time soon, so we are proposing to gradually migrate the grass to a Meadow, which will be self-protecting and should encourage a diversity of wildlife into the area.

The Plane trees are very well established, and we have been advised to leave them alone, though we do need to try and protect the ground around them which again is subject to very heavy use.

Spot plants



Juniper scopulorum 'Blue Arrow'



Virburnum x bodnantense 'Dawn'

Underplanting



Digitalis purpurea



Acanthus mollis



Perovskia 'Blue Spires'



Astrantia 'Buckland'



Geranium 'Rozanne'

Denser planting

Sarcococca Confusa: Christmas Box



Spirea

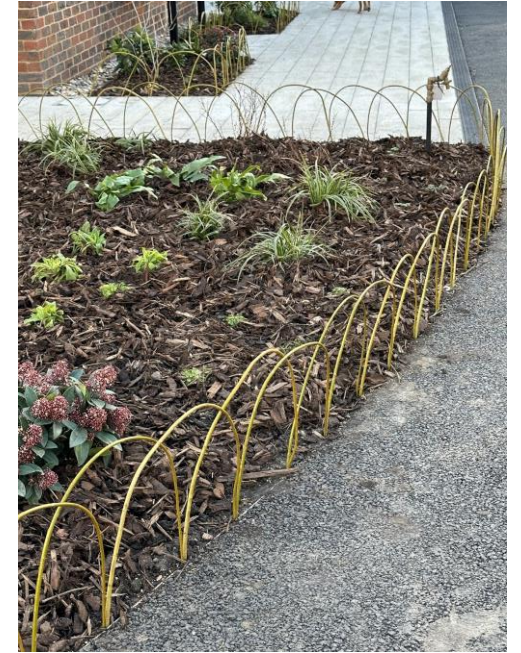


Fencing the beds



Current chestnut paling

Low Willow arches



Picket Fence
for more
protection



Logs to indicate borders



**MYcenae Gardens are YOURcenae
Gardens**

Together we can make a difference